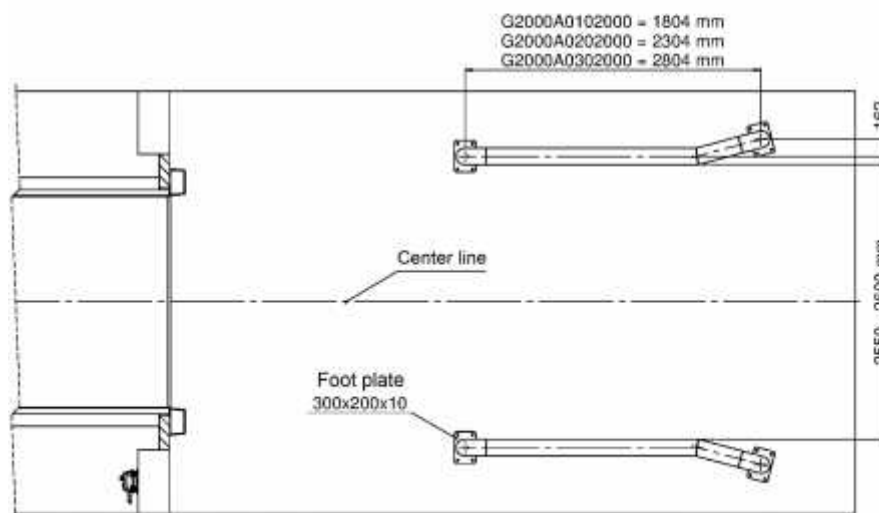
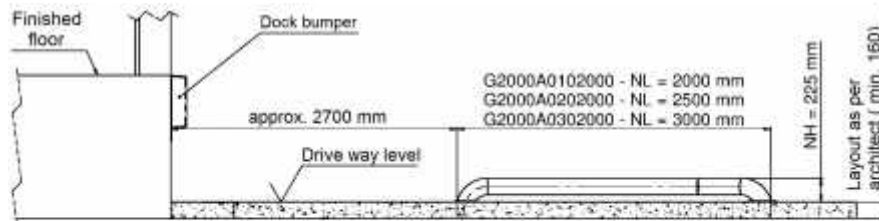


Wheel Guide • Model: G 2000A0002000

Installation: Foot Plate on Concrete Approach

NL Nominal length

NH Nominal height - Measured from drive way level



Standard Features:

- Tube frame with 160 mm diameter
- Funnel bend 162 mm on each side (front)
- Foot plate 300 x 200 x 10 mm (2 per guide)
- Entire wheel guide is zinc-plated

Options:

- Steel construction painted in RAL colour
- Tube with different diameter

Other options available on request

Mounting material:

- 16 x anchor W-HAZ-S M12 x 127

Specifications subject to change without notice.

Project-related information: